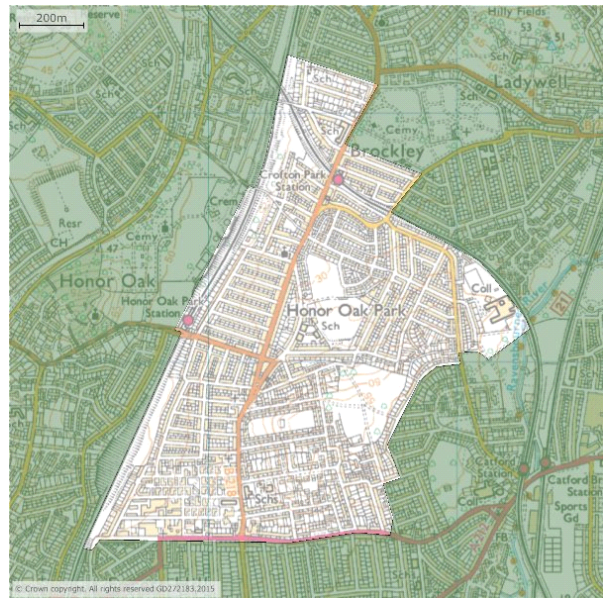


2011 Ward Labour Market Profile E36007470 : Crofton Park

This summary gives an overview of the labour market within E36007470 : Crofton Park 2011 ward which is in the Lewisham local authority .



Resident Population

Population aged 16-64 (2013)

	E36007470 : Crofton Park (Numbers)	Lewisham (Numbers)	England And Wales (Numbers)
All persons	10,731	199,618	36,278,017
Males	5,241	98,413	18,078,920
Females	5,490	101,205	18,199,097

Source: ONS mid-year population estimates

Note: Percentages are based on total population.

Labour Supply

Employment and unemployment (2011)

	E36007470 : Crofton Park (Numbers)	E36007470 : Crofton Park (%)	Lewisham (%)	England And Wales (%)
All People				
Economically Active	8,576	80.4	77.5	76.8
In Employment	7,876	73.9	69.4	71.0
Employees	6,438	60.4	57.9	60.6

2011 Ward profile for E36007470 : Crofton Park

Self Employed	1,438	13.5	11.5	10.4
Unemployed	700	8.2	10.5	7.6
Males				
Economically Active	4,326	83.3	81.6	82.0
In Employment	3,959	76.2	72.4	75.1
Employees	3,066	59.0	57.2	60.5
Self Employed	893	17.2	15.2	14.7
Unemployed	367	8.5	11.2	8.4
Females				
Economically Active	4,250	77.7	73.6	71.7
In Employment	3,917	71.6	66.5	66.9
Employees	3,372	61.7	58.6	60.7
Self Employed	545	10.0	7.9	6.2
Unemployed	333	7.8	9.7	6.8

Source: 2011 Census (Table DC6107EW - Economic Activity by sex by age)

Note: Percentages are based on population aged 16-64, except unemployed which is based on economically active.

Economic inactivity (2011)

	E36007470 : Crofton Park (Numbers)	E36007470 : Crofton Park (%)	Lewisham (%)	England And Wales (%)
All People				
Economically Inactive	2,085	19.6	22.5	23.2
Retired	271	2.5	2.5	4.9
Student	687	6.4	7.8	6.6
Looking After Home Or Family	417	3.9	4.7	4.9
Long-Term Sick Or Disabled	394	3.7	4.4	4.6
Other	316	3.0	3.2	2.3
Males				
Economically Inactive	868	16.7	18.4	18.0
Retired	91	1.8	2.0	3.5
Student	362	7.0	7.7	6.7
Looking After Home Or Family	70	1.3	1.1	0.9
Long-Term Sick Or Disabled	205	3.9	4.7	4.8
Other	140	2.7	2.9	2.1
Females				
Economically Inactive	1,217	22.3	26.4	28.3
Retired	180	3.3	2.9	6.3
Student	325	5.9	7.8	6.4
Looking After Home Or Family	347	6.3	8.2	8.8
Long-Term Sick Or Disabled	189	3.5	4.0	4.3
Other	176	3.2	3.4	2.5

Source: 2011 Census (Table DC6107EW - Economic Activity by sex by age)

Note: Percentages are based on population aged 16-64.

Full time/part time working (2011)

2011 Ward profile for E36007470 : Crofton Park

	E36007470 : Crofton Park (Numbers)	E36007470 : Crofton Park (%)	Lewisham (%)	England And Wales (%)
All People				
Full Time In Employment	6,044	75.1	73.2	70.7
Part Time In Employment	2,002	24.9	26.8	29.3
Males				
Full Time In Employment	3,337	82.5	81.1	84.1
Part Time In Employment	707	17.5	18.9	15.9
Females				
Full Time In Employment	2,707	67.6	64.9	55.7
Part Time In Employment	1,295	32.4	35.1	44.3

Source: 2011 Census (Table DC6107EW - Economic Activity by sex by age)

Note: Figures are for persons aged 16 and over and percentages are based on all persons in employment.

Employment by occupation (2011)

	E36007470 : Crofton Park (Numbers)	E36007470 : Crofton Park (%)	Lewisham (%)	England And Wales (%)
1 Managers And Senior Officials	874	10.9	9.6	10.8
2 Professional	2,192	27.2	22.6	17.4
3 Associate Professional & Technical	1,528	19.0	16.5	12.7
4 Administrative & Secretarial	958	11.9	11.8	11.4
5 Skilled Trades	569	7.1	8.1	11.5
6 Personal Services	595	7.4	9.4	9.4
7 Sales And Customer Services	463	5.8	7.6	8.4
8 Process Plant And Machine Operatives	273	3.4	4.1	7.2
9 Elementary Occupations	594	7.4	10.2	11.2

Source: 2011 Census (Table DC6112EW - Occupation by sex by age)

Note: Figures are for persons aged 16 and over by Soc 2010 major groups. Percentages are based on all persons in employment.

Qualifications (2011)

	E36007470 : Crofton Park (Numbers)	E36007470 : Crofton Park (%)	Lewisham (%)	England And Wales (%)
All People				
Level 4 Qualifications And Above	5,178	48.6	40.8	29.7
Level 3 Qualifications	1,189	11.2	11.9	14.5
Level 2 Qualifications	1,326	12.4	13.3	17.2
Level 1 Qualifications	1,062	10.0	11.9	15.2
Apprenticeships And Other Qualifications	805	7.6	9.7	8.6
No Qualifications	1,101	10.3	12.5	15.0

Source: 2011 Census (Table LC5106EW - Highest level of qualification by economic activity)

Note: All figures are for persons aged 16 to 64.

Out-Of-Work Benefits

The Jobseeker's Allowance (JSA) is payable to people under pensionable age who are available for, and actively seeking, work.

Total JSA claimants (June 2015)

	E36007470 : Crofton Park (Numbers)	E36007470 : Crofton Park (%)	Lewisham (%)	Great Britain (%)
All People	203	1.9	2.6	1.7
Males	123	2.3	3.1	2.2
Females	80	1.5	2.1	1.3

Source: Jobseeker's Allowance with rates and proportions

Note: The percentage figures show the number of JSA claimants as a proportion of resident population aged 16-64.

JSA claimants by age and duration (June 2015)

	E36007470 : Crofton Park (Numbers)	E36007470 : Crofton Park (%)	Lewisham (%)	Great Britain (%)
By Age Of Claimant				
Aged 18-24	30	14.3	17.2	20.3
Aged 25-49	125	60.6	59.2	57.0
Aged 50 And Over	50	24.6	23.4	22.6
By Duration Of Claim				
Up To 6 Months	120	58.6	55.7	55.5
Over 6 Up To 12 Months	30	14.3	17.8	16.9
Over 12 Months	55	27.1	26.5	27.6

Source: Jobseeker's Allowance by age and duration

Note: The percentage figures represent the number of JSA claimants in a particular category as a percentage of all JSA claimants.

DWP benefit claimants

The DWP benefit claimants table is not yet available. This will be added once DWP supply the data on the new 2011 frozen ward basis.

Definitions And Explanations

Most of the figures in this report are derived from the 2011 Census which was held on 27 March 2011. Further 2011 Census statistics are available from the Nomis wizard/advanced query for areas in England and Wales and the [SCROL](#) site for areas in Scotland.

Census figures are used as these provide the only comprehensive source of labour market information at ward level. ONS' preferred source for this information at higher levels (local authority, parliamentary constituency, regions) is the Annual population survey. Although the ward profile includes comparative figures for local authorities and regions, ONS advises that at these geographic levels the APS figures available in the local authority profile should be used in preference to the Census figures in the ward profile. Further information on comparing Census and LFS data is given below.

Resident Population

The estimated population of an area includes all those usually resident in the area, whatever their nationality. HM Forces stationed outside the United Kingdom are excluded but foreign forces stationed here are included. Students are taken to be resident at their term-time address.

Labour Supply

Economic activity: They relate to whether or not a person was working or looking for work in the week before Census. The concept of Economic Activity is compatible with the International Labour Organisation (ILO) definition of economic status.

Economically active: All people who were working in the week before the Census are described as economically active. In addition, the category includes people who were not working but were looking for work and were available to start work within 2 weeks. Full-time students who are economically active are included.

Economic activity rate (working age): The number of people, who are economically active aged 16 to 64, expressed as a percentage of all people aged 16 to 64.

Economically inactive: Within the Economic Activity classification, a person is either Economically Active or Inactive. Specific categories of Economic Inactivity are: Retired, Student (excludes those students who were working or in some other way were economically active), Looking after family/ home, Permanently sick/ disabled and Other. A person who is looking for work but is not available to start work within 2 weeks is counted as Economically Inactive.

Main job: The main job is the job in which a person usually works the most hours. Questions on employment relate to each person's main job.

In employment: Any person who did paid work in the week before the Census, whether as an employee or self-employed, is described as employed or in employment. 'Paid work' includes casual or temporary work, even if only for one hour; being on a government-sponsored training scheme; being away from a job/business ill, on maternity leave, on holiday or temporarily laid off; or doing paid or unpaid work for their own or family business.

Employment rate: The number of people in employment expressed as a percentage of the resident population.

Employee: The distinction between employee and self-employed is determined by the response to the question 'Do (did) you work as an employee or are (were) you self-employed?' It relates to the person's main job in the week before the Census or, if not working in the week before the Census, their last main job.

Self-employed: The distinction between employee and self employed is determined by the response to the question 'Do (did) you work as an employee or are (were) you self-employed?' It relates to the person's main job in the week before Census or, if not working in the week before Census, their last main job.

Hours worked: The question on how many hours a week a person usually works in their main job is used to derive whether a person is working full-time (31 hours or more a week) or part-time (30 hours or less per week).

Full-time working: Working full-time is defined as working 31 hours or more a week.

Part-time working: Working part-time is defined as working 30 hours or less a week.

Unemployed: A person is defined as unemployed if he or she is not in employment, is available to start work in the next 2 weeks and has either looked for work in the last 4 weeks or is waiting to start a new job. This is consistent with the International Labour Office (ILO) standard classification.

Occupation: A person's occupation is coded from the response to the question asking for the full title of the Main job and the description of what is done in that job. It is coded to the 2010 edition of the Standard Occupational Classification (SOC).

Qualifications

Level 4 qualifications and above: Degree (for example BA, BSc), Higher Degree (for example MA, PhD, PGCE), NVQ Level 4-5, HNC, HND, RSA Higher Diploma, BTEC Higher level, Foundation degree (NI), Professional qualifications (for example teaching, nursing, accountancy)

Level 3 qualifications: 2+ A Levels/VCEs, 4+ AS Levels, Higher School Certificate, Progression/Advanced Diploma, Welsh Baccalaureate Advanced Diploma, NVQ Level 3; Advanced GNVQ, City and Guilds Advanced Craft, ONC, OND, BTEC National, RSA Advanced Diploma

Level 2 qualifications: 5+ O Level (Passes)/CSEs (Grade 1)/GCSEs (Grades A*-C), School Certificate, 1 A Level/ 2-3 AS Levels/VCEs, Intermediate/Higher Diploma, Welsh Baccalaureate Intermediate Diploma, NVQ level 2, Intermediate GNVQ, City and Guilds Craft, BTEC First/General Diploma, RSA Diploma

Level 1 qualifications: 1-4 O Levels/CSE/GCSEs (any grades), Entry Level, Foundation Diploma, NVQ Level 1, Foundation GNVQ, Basic/Essential Skills

Apprenticeships and other qualifications: Apprenticeship, Vocational/Work-related Qualifications, Foreign Qualifications (not stated/level unknown)

No qualifications: No formal qualifications held

Out-of-work Benefits

Jobseeker's Allowance

This is the number of people claiming Jobseeker's Allowance (JSA) and National Insurance credits at Jobcentre Plus local offices. People claiming JSA must declare that they are out of work, capable of, available for and actively seeking work during the week in which the claim is made.

The percentage figures express the number of claimants resident in an area as a percentage of the population aged 16-64 resident in that area.

The total JSA claimants is mostly derived from the Jobcentre Plus computer records. For various reasons, e.g. a claimant's National Insurance number is not known, a few claims have to be dealt with manually. These clerical claims, which amount to less than 1 per cent of the total, are counted separately and not analysed in as much detail as the computerised claims. The count of total JSA claimants includes clerical claims, but only the computerised claims are analysed by age and duration.

Introduction of Universal Credit

Tables for Jobseeker's Allowance do not include claimants of Universal Credit who are claiming benefits principally for the reason of being unemployed.

A [list of Jobcentres where Universal Credit is available](#) can be found on the GOV.UK website.

New tables including claimants of Universal Credit will be introduced as soon as possible.

Copyright

Under the terms of the [Open Government Licence](#) (OGL) and [UK Government Licensing Framework](#) (launched 30 September 2010), anyone wishing to use or re-use ONS material, whether commercially or privately, may do so freely without a specific application for a licence, subject to the conditions of the OGL and the Framework.

These new arrangements replace the previous Click-Use and Value Added Licences. For further information, go to the links above, phone 020 8876 3444 or email psi@nationalarchives.gov.uk

Users should include a source accreditation to ONS:

Source: Office for National Statistics

Copyright of a third party

The permission to reproduce Crown protected material does not extend to any material on this site which is identified as being authored by a third party. Authorisation to reproduce such material must be obtained from the copyright holders concerned.